



*60th Anniversary*

July 15-21, 2024

# Open Class Book

**Ottawa County Agricultural Society**

7870 W. State Route 163, Oak Harbor, Ohio 43449

419-898-1971 \* fax 419-898-2210 \* [ocfair@amplex.net](mailto:ocfair@amplex.net)

# OPEN CLASS HOME ECONOMICS

Department 101 through 108

July 15 through 21, 2024

## Premiums HOME ECONOMICS (departments 101 through 107)

1<sup>st</sup> - \$3.00    2<sup>nd</sup> - \$2.00    3<sup>rd</sup> - \$1.00

- ◆ Exhibitor must be at least 18 years old and have purchased a Fair/Season Pass for \$25.00. No Concession Passes allowed. The child of an adult who holds a Fair/Season Pass may enter as a student.

**NO ENTRIES WILL BE ACCEPTED WITHOUT PROOF OF PASS!!!!!!**

### RULES & REGULATIONS

- ◆ Student and adult exhibits will be judged separately. **Specify on entry blank if exhibitor is a student.**
- ◆ **No entry will be accepted without pre-registration.** Entry forms are available in the fair book, online, and from Senior Fair office. All entries must be in by **FRIDAY, July 12, 2024.**
- ◆ **CANNED GOODS, NEEDLEWORK, QUILTING, ARTS & CRAFTS & CHILDREN'S CONTEST exhibits will be received between 2:00 and 6:00 p.m. on SUNDAY, July 14** in Exhibit Barn next to Babyland (D-1).
- ◆ BAKED GOODS will be received between 9:00 and 11:00 a.m. on Thursday, July 18. The department will be closed during judging. Premiums and ribbons will be awarded.
- ◆ All exhibits are to be removed on Sunday, July 21 from 6:00 to 7:00 p.m. Exhibitor's entry stub must be available to claim exhibits and premiums. All premiums not picked up at this time will be considered donated to the fair and cannot be claimed later. **Anyone removing their exhibits before 6:00 p.m. Sunday will forfeit their premium.**
- ◆ The Ag Society will not be responsible for stolen or damaged entries.
- ◆ PROFESSIONAL exhibits will not be eligible in all departments for Grand Champion awards. This includes any instructor, demonstrator, dealer, etc.
- ◆ The judges will, in making awards, be governed by design and workmanship and are requested to pass-by all articles which are not worthy in their judgment. Cleanliness of articles will be considered in judging. It is the quality of the work to be considered, not the size it is in competition with. A small article, having sufficient amount of work upon it to show skill, will receive as much consideration as larger ones.
- ◆ Department will be closed during all judging.
- ◆ **ARTICLES MUST BE HANDMADE BY THE EXHIBITOR AND FINISHED SINCE LAST FAIR.**
- ◆ **NOTE: PLEASE USE BLUE RIBBON ONLINE FOR ENTRIES.**

## CANNED GOODS - DEPT. 101

Judging Monday, July 15, 2024

- ◆ Must follow all general Open Class Home Economics Rules in addition to the following:
- ◆ All entries must be in pint or quart CLEAR glass jars. NO blue jars or mayonnaise jars will be accepted.
- ◆ Entries in Classes 30-40 must be in pint or standard jelly jars. NO freezer jams will be accepted.
- ◆ Exhibitors may not enter more than one in each class or subclass if available. (e.g. Bread & Butter and Dill Pickles)



### DEPT. 101 - CLASSES 1 - 30

1. Applesauce
2. Cherries, Sour
3. Cherries, Sweet
4. Peaches
5. Pears
6. Misc. Fruits - named
7. Misc. Fruit Juice - named
8. Beans, Green
9. Beans, Wax or Yellow
10. Beets
11. Beets, Pickled
12. Carrots
13. Corn
14. Corn, Chowder or Relish
15. Mixed Vegetables
16. Misc. Vegetables – named
17. Misc. Vegetables, pickled – named
18. Peppers, Hot
19. Peppers, Sweet
20. Pickles, Bread & Butter
21. Pickles, Dill
22. Pickles, Sweet
23. Pickles, Misc. - named
24. Pickled Relish - named
25. Tomatoes
26. Tomato Juice
27. Tomato Sauce
28. Salsa
29. Misc. Sauces - named
30. Jams, Strawberry
31. Jams, Strawberry Combination
32. Jams, Grape
33. Jams, Peach
34. Jams, Misc. - named
35. Jellies, Grape
36. Jellies, Apple
37. Jellies, Strawberry
38. Jellies, Misc. - named
39. Apple Butter
40. Misc. Butters - named

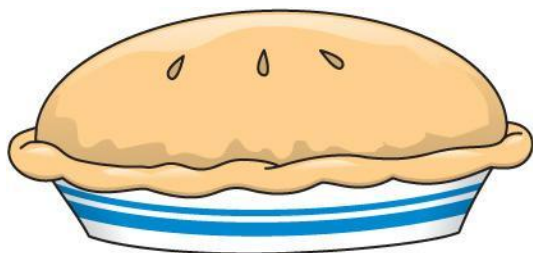
## **DOMESTIC BAKING - DEPT. 102**

**Judging Thursday, July 18, 2024 - 11:30 a.m.**

- ◆ Must follow all general Open Class Home Economics Rules in addition to the following:
- ◆ Each exhibitor may not enter more than one in a class or subclass. All entries must be well covered. Plastic bags with twist ties or that "zip" shut are best for the directors and judges to handle. Items must be in disposable containers. List on entry form what KIND for Misc. Classes. **NO REFRIGERATED ITEMS.**
- ◆ BAKED GOODS should be brought to the Exhibit Barn next to Babyland (D-1) Thursday, July 18 between 9:00 and 11:00 a.m. Judging will be at 11:30 a.m. All baked goods will be sold following the judging. Proceeds will be donated to the Fair.
- ◆ All entries must be baked within 24 hours.

### **DEPT. 102 CLASSES 1-12**

1. Breads, White Yeast
2. Breads, Banana Nut
3. Breads, Zucchini
4. Sweet Rolls (6)
5. Yeast Rolls (6)
6. Muffins, any type, named (6)
7. Misc. Bread, named
8. Cake, Angel Food
9. Cake, Chocolate
10. Cake, Coffee
11. Cake, Bundt
12. Cake, Misc. - named
13. Cupcakes, Frosted (6)
14. Cookies, Molasses (8)
15. Cookies, Chocolate Chip (8)
16. Cookies, Oatmeal (8)
17. Cookies, Peanut Butter (8)
18. Cookies, Sugar (8)
19. Cookies, Misc., - named (8)
20. Pie, Apple
21. Pie, Berry
22. Pie, Cherry
23. Pie, Peach
24. Pie, Pumpkin
25. Pie, Misc. - named
26. Candy, named - if pieced (8)
27. Brownies (8)
28. International Baked Goods – named, include country of origin



## **NEEDLEWORK - DEPT. 103**

**Judging Monday, July 15, 2024**

- ◆ Must follow all general Open Class Home Economics Rules in addition to the following:
- ◆ Only three articles will be accepted in a class from one exhibitor. Specify on entry blank what the article is, e.g. wall hanging, doily, scarf, etc.
- ◆ **Please specify size of exhibit on entry blank and if exhibit is to be hung.**

### **DEPT. 103 - CLASSES 1 - 16**

1. Embroidery, Hand or stamped embroidery
2. Embroidery, Counted Cross Stitch
3. Embroidery, Misc.
4. Crocheted, Afghan
5. Crocheted, Clothing
6. Crocheted, Misc. - named
7. Knitted, Hand Knitted – Afghan
8. Knitted, Hand Knitted – Any other
9. Knitted, Misc. – named
10. Felting – Knitted or Crocheted
11. Amigurumi – Knitted or Crocheted
12. Hooked
13. Home Sewing, Children sized item
14. Home Sewing, Adult sized item
15. Home Sewing, Doll Clothes
16. Home Sewing, Misc. – named

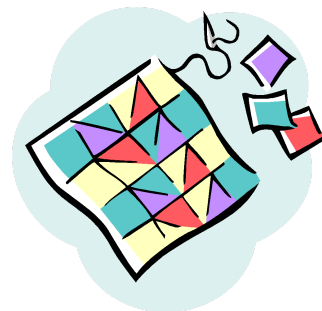
## **QUILTING - DEPT. 104**

**Judging Monday, July 15, 2024**

- ◆ The same rules will be followed as in Dept. 103.

### **DEPT. 104 - CLASSES 1-14**

1. Appliquéd, Crib Size
2. Appliquéd, Any other size
3. Pieced, Crib Size
4. Pieced, Any other size
5. Whole Cloth Quilt, Crib Size
6. Whole Cloth Quilt, Any other size
7. Combination Quilt, Crib size
8. Combination Quilt, Any other size
9. Clothing, Appliquéd
10. Clothing, Pieced
11. Clothing, Quilted Only
12. Tote bags
13. Purses
14. Group – Any quilted item created and worked on by more than one person.



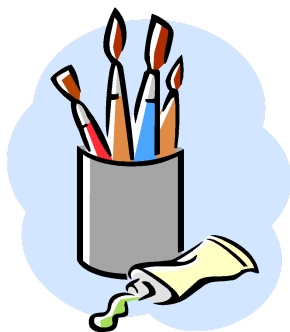
## ARTS & CRAFTS - DEPT. 105

Judging Monday, July 15, 2024

- ◆ Must follow all general Open Class Home Economics Rules in addition to the following:
- ◆ Maximum 3 exhibits in each class of arts & crafts per exhibitor
- ◆ **NO COLLECTIBLES.**
- ◆ A hanging area will be provided. Exhibitors are asked to **have matted pictures, plaques, wreaths and swags READY TO BE HUNG** with appropriate hooks/wires. **Not responsible if item falls due to improper hanger.**
- ◆ All paint and glue must be dry.

### DEPT. 105 - CLASSES 1 - 29

1. Basket weaving
  2. Sea Glass Art
  3. Folded book
  4. Ceramics
  5. Handmade soap
  6. Stained glass
  7. Graphic sketches
  8. Hand-built pottery
  9. Handmade greeting card
  10. Jewelry
  11. Painting, water
  12. Painting, oil
  13. Painting, acrylic
  14. Painting, painting party creation – any painting made at a one-time painting party
  15. Decorated clothing
  16. **Diamond Painting Art**
  17. Paper craft
  18. Origami
  19. 3D printer design
  20. Scrapbooking - 1 page not to exceed 12" x 12" (Must be submitted in page protector)
  21. Sculpture
  22. Swags
  23. Wreaths
  24. Woodworking
  25. Wood Carving
  26. Fused Glass
  27. Creation using terra cotta flower pots
  28. Coloring Page - Special Edition page only
- Find the Special Edition Ottawa County Coloring page either online or at the Sr. Fairboard Office. .*
29. Misc. – named



## PHOTOGRAPHY - DEPT. 106

Judging Monday, July 15, 2024

- ◆ Must follow all general Open Class Home Economics Rules in addition to the following
- ◆ Amateurs only. **NO PROFESSIONALS**
- ◆ All exhibits must be enlargements of 8" x 10". Not to exceed 11" x 14" overall dimensions. Pictures over maximum size will be refused.

- ◆ All enlargements must be mounted on 1/8-inch thick mount board or poster board, **WHITE OR BLACK ONLY**. Matted prints are allowed. **NO FRAMED PRINTS WILL BE ACCEPTED..**
- ◆ Two (2) photographs in each class of photography per exhibitor will be accepted.
- ◆ Same photograph cannot be entered in more than one (1) category.
- ◆ Entry tags will be attached on bottom right corner.

### DEPT. 106 - CLASSES 1 - 9

1. Still Life/Figure
2. Animals
3. Flowers
4. Insects/Bugs/Reptiles
5. Landscape/Scenery
6. People
7. Selfie
8. Altered
9. Misc. other

## CHILDREN'S CONTEST - DEPT. 107

Judging Monday, July 15, 2024

- ◆ Must follow all general Open Class Home Economics Rules

### Popsicle Art

- ◆ Make a creation out of any type of wood craft sticks.
- ◆ You may use glue, paint, stain, felt, buttons, etc. to complete and decorate your creation.



### Recycled Art

- ◆ Get Creative. Make a sculpture or art piece out of empty bottles, caps, egg cartons etc.
- ◆ You may add beads, paint, paper, yarn, buttons, etc....
- ◆ **Please name your creation on a 3 x 5 index card.**

### Coloring Page

- ◆ Find the Special Edition Ottawa County Coloring page either online or at the Sr. Fairboard Office. **EVERYONE WILL COLOR THE SAME PAGE.**

### DEPT. 107 - CLASSES 1 - 4

1. **Recycled Art - Ages 5 and under**
2. **Recycled Art – Ages 6-10**
3. **Recycled Art – Ages 10 and under**
4. **Recycled Art – Ages 11-16**
5. Coloring Page –Ages 5 and under
6. Coloring Page – Ages 6-10
7. Coloring Page – Ages 11-16





# OPEN CLASS HORTICULTURE

## FLOWER ACTIVITIES FOR THE WEEK

- 1<sup>st</sup> SHOW A – TUESDAY, JULY 16:** Specimen and Arrangement entries accepted - 8:00 - 10:30 a.m.  
Silk arrangements accepted - MONDAY ONLY.  
All Judging - 12:00 noon
- 2<sup>nd</sup> SHOW B – FRIDAY, JULY 19:** Specimen and Arrangement entries accepted - 8:00 - 10:30 a.m.  
Judging - 12:00 noon
- SUNDAY, JULY 21:** Pick up containers and awards between 6:00 - 7:00 p.m.

## NO ENTRIES ACCEPTED WITHOUT PROOF OF PASS!!!!!!

### AWARDS

Best of Show - Artistic - Junior and Senior Divisions  
Best of Show - Horticulture - Junior and Each Senior Division if judge warrants

### PREMIUM SCHEDULE

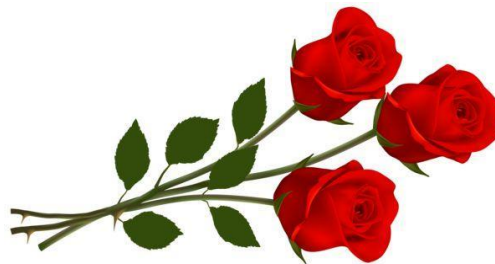
Horticulture 1st - \$3.00    2nd - \$2.00    3rd - \$1.00  
Artistic    1st - \$5.00    2nd - \$4.00    3rd - \$3.00

### NOTICE TO ALL PARTICIPANTS:

- Pre-registration (Artistic only) must be received by **Friday, July 12, 2024**. Horticulture pre-registration is optional.
- Exhibitor's tags may be picked up prior to the fair for completion of information.
- No valuable articles are to be brought. Agricultural Society is not responsible for stolen or damaged articles.
- Exhibits shown in Exhibit Barn next to Babyland (D-1).
- Open competition.
- Vases furnished for all flowers except classes named.
- Specimens must be grown by exhibitor.
- **Additional entries of different varieties or color in all specimen categories MUST BE LABELED TO AS TO VARIETY & LIMITED TO 3.**
- Exhibits with variety named/labeled place higher.
- No prize awarded unless entry is worthy.
- **No Best of Show unless variety is named.**
- Judge and directors reserve the right to sub-divide, eliminate or group classes.
- Arrangements must be in place by 10:30 a.m. the day of the show. **Exhibitors must be out of judging area by 11 a.m.**
- **Please label all "Any other class entries."**
- Wedges of wood or other material should be used to keep bloom erect.
- All exhibits of single round blooms must be disbudded unless noted, including spikes.
- Sprays are not disbudded.
- Points for foliage are lost when foliage is removed above waterline.
- Exhibits not conforming to schedule will be disqualified.
- Judging by standard system.

## Horticulture - Dept. 110

### CLASS A – ROSES



### SCORE CARD USED BY THE AMERICAN ROSE SOCIETY FOR JUDGING HYBRID TEA ROSES

Form	25
Stem and Foliage	20
Color	20
Size	10
Substance	15
Balance and Proportion	<u>10</u>
	100

### INTERPRETATION OF SCORE CARD

Form: A rose with good form should be gracefully shaped and symmetrically arranged around a high center, one-half to three-fourths open. However, it is to be noted that good form for a rose is defined as being at its most beautiful, most nearly perfect, stage of development. Some roses have better form when slightly less than one-half open and others are best when two-thirds or three-fourths open. Exhibition varieties normally have more petals and higher centers than decorative types.

### HYBRID TEA ROSES

Hybrid tea roses should be gracefully shaped and symmetrically arranged around a high center. Roses should be at their most perfect state of beauty at the time of judging, generally  $\frac{1}{2}$  or  $\frac{3}{4}$  open. Foliage should be clean with no sign of disease or insect damage. Only natural cleaning of foliage is permitted. All foliage above waterline is to remain on the main shoot. Thorns are to remain except those below the water line of vases. Hybrid tea roses are shown disbudded. Stem length should be in proportion to size of bloom. Stem on stem exhibits will not be judged.

### FLORIBUNDA ROSES

Floribunda roses should have one cane showing two or more leaves having five or seven leaflets on the cane above which bud eyes produce growth and terminate in a cluster or clusters of bloom. These roses must be naturally grown and shown as 1 bloom disbudded or spray not disbudded. Removal of dead central flower does not constitute disbudding.

### GRANDIFLORA ROSES

Grandiflora roses are exhibited as naturally grown single flowers on a stem or as naturally grown flowers with more than one bloom to a stem. Single blooms judged by same standards as hybrid tea roses.

(Continued on next page)

## OLD-FASHIONED, ENGLISH OR SHRUB ROSES

Old-fashioned, English (David Austin), or Shrub roses should have one stem and not be disbudded.

### HYBRID TEA ROSES - 1 bloom - must be disbudded

1. White
2. Yellow
3. Yellow Blend
4. Pink
5. Pink Blend
6. Red or Red Blend
7. Orange-red or Apricot Blend
8. Orange, Orange-pink or Orange Blend
9. Lavender, Mauve or Blend
10. Full Blown Rose - showing center
11. Display of 3 Hybrid Tea Roses of same varieties - named
12. Display of 3 Hybrid Tea Roses of different varieties - named

**NOTE: Displays must use individual containers and placed in basket or on tray**

### ANY OTHER ROSES - any color

13. Floribunda - 1 bloom - disbudded
14. Floribunda - 1 spray - not disbudded
15. Polyantha - 1 spray - not disbudded
16. Grandiflora - 1 bloom - disbudded
17. Grandiflora - 1 spray - disbudded
18. Old-fashion, English or Shrub Rose - 1 stem - not disbudded
19. Any other rose not listed

### MINIATURE ROSES - 1 stem - no side buds

20. White
21. Yellow or yellow blend
22. Pink or pink blend
23. Red or red blend
24. Orange, Apricot or Blend
25. Any other miniature 1 stem rose
26. Miniature Spray-1 spray - not disbudded - WHITE
27. Miniature Spray-1 spray-not disbudded-Yellow or blend
28. Miniature Spray-1 spray-not disbudded-Pink or blend
29. Miniature Spray-1 spray-not disbudded-Red or blend
30. Miniature Spray-1 spray-not disbudded-Orange or blend
31. Miniature Spray-1 spray-not disbudded-Any other

## CLASS B – GLADIOLUS

1. Gladiolus - 1 spike - disbudded with foliage
2. Exhibitor to provide large clear bottle.
3. Each class may have different blends, varieties and must be LABELED.

1. White
2. Green
3. Yellow
4. Orange
5. Pink or Salmon
6. Red
7. Lavender or Purple
8. Mini – Novelty
9. Best Display – Five Different Colors – each in a container, placed on a tray or basket

## CLASS C - ANNUALS OR FLOWERS PLANTED ANNUALLY

1. Calendulas - 1 bloom - disbudded
2. Cleome - 1 stem
3. Bachelor Button - single bloom
4. Coleus - 1 stem without flowers
5. Cosmos – spray

Marigold - large - over 2 inches across - 1 bloom –disbudded

6. Yellow
7. Orange
8. White

Marigold - small - 1 spray

9. Yellow/Yellow Blend
10. Orange/Orange Blend

11. Petunia - single - at least 3 blooms
12. Petunia - double - at least 3 blooms ( no seed pods)
13. Salvia
14. Snapdragon - 1 spike - no seed pods
15. Zinnia - small - 3 inches & under
16. Zinnia - large - over 3 inches
17. Dahlia - cactus - 1 bloom - disbudded
18. Dahlia - decorative - 1 bloom - disbudded
19. Dahlia - pompon - 1 bloom under 2 inches - disbudded
20. Dahlia for bedding - 2 blooms
21. Larkspur - 1 stalk
22. Sunflower - 1 bloom - disbudded
23. Annual Statice - 1 stalk
24. Celosia

Any other annual not listed - must be labeled

25. Round Form - limit to 3 entries
26. Spike - limit to 3 entries
27. Spray - limit to 3 entries

## CLASS D – PERENNIALS

1. Hosta - 1 mature leaf - named
2. Coreopsis - 1 spray
3. Daisy - Shasta - 1 bloom – disbudded
4. Black-eyed Susan – 1 bloom – disbudded
5. Daylily - 1 scape - need container – named
6. Delphinium - 1 spike
7. Gaillardia - 1 bloom – disbudded

Echinacea (Coneflower) - 1 bloom - disbudded

8. Pink/Purple
9. White
10. Yellow
11. Any color not listed

12. Hollyhock - 1 spike
13. Liatris - 1 spike
14. Phlox - 1 spike
15. Balloon flower - 1 stalk
16. Allium - 1 stalk
17. Astilbe - 1 spike
18. Yarrow - 1 stem
19. Perennial Statice - 1 stem
20. Lily - 1 stalk - need container
21. Globe Thistle - 1 stem
22. Sea Holly- 1 stalk
23. Any flowering bush or tree- 1 stem

Any other perennial

24. Round Form - limit to 3 entries
25. Spike - limit to 3 entries
26. Spray - limit to 3 entries

### **CLASS E – HERBS** **Raised for Decorative or Flower**

**Must be in flower stage**

1. Basil - 1 stem - named - fresh cut
2. Lavender - 1 stem - named - fresh cut
3. Mint - 1 stem - named - fresh cut
4. Sage - 1 stem - named - fresh cut
5. Any Annual - 1 stem - named - fresh cut - limit to 3 entries
6. Any Perennial - 1 stem - named - fresh cut - limit to 3 entries
7. 3 Herbs in a basket w/recipe -

### **CLASS G - EDUCATIONAL EXHIBIT of CHOICE**

1. Exhibitor to provide own card table, covering, handouts if appropriate, etc...



## **ARTISTIC FLORAL ARRANGEMENTS – DEPT. 111** **THEME: “1964 Beatle Mania”**

- One entry per class.
- Flowers used in artistic arrangements must be garden and wild flowers and be the work of the exhibitor, not exceeding 24” in width.
- All plant material must be named on a 3” x 5” card.
- Accessories may be used in any arrangements.
- **NO** artificial material to be used, unless noted.
- No fresh materials to be painted or dyed.
- Dried material is allowed.
- Fruits or vegetables used in arrangements should not be cut.

### **Show A**

**Tuesday, July 16, 2024 - Senior Division**

1. “All You Need is Love” - not to exceed 5” in any direction
2. “Here Comes the Sun” – round arrangement
3. “Strawberry Fields Forever” – design incorporating red flowers
4. “The Long and Winding Road” – arrangement showing movement
5. “Lucy in the Sky with Diamonds” – vertical design

### **Show B**

**Friday, July 19, 2024 - Senior Division**

1. “Eleanor Rigby” – small design– More than 5” and less than 12” in any direction
2. “Let it Be” – symmetrical design

3. “Yellow Submarine” - underwater design
4. “The Hippy Hippy Shake” – arrangement showing movement
5. “A Hard Days Night” – horizontal design

## **JUNIOR DIVISION – DEPT. 112** **FOR AGES 5-17 YEAR OLDS**

### **SPECIMENS -- SHOW A & B**

1. Marigold - small - 1 spray
2. Marigold - Large - over 2 inches - disbudded
3. Petunia - single
4. Petunia - double
5. Coneflower - 1 bloom
6. Daylily - 1 scape - named
7. Zinnia - large - 1 bloom over 3 inches
8. Cosmos - 1 spray
9. Hosta - 1 mature leaf - named
10. Bachelor Button
11. Sunflower
12. Cosmos

Any other annual not listed - must be labeled

13. Round Form - limit to 3 entries
14. Spike - limit to 3 entries
15. Spray - limit to 3 entries



## **JUNIOR ARTISTIC ARRANGEMENTS**

### **Show A**

**Tuesday, July 16, 2024 - Junior Division**

1. “Can’t Buy Me Love” – own interpretation
2. “Eight Days a Week” – design must include eight varieties

### **Show B**

**Friday, July 19, 2024 - Junior Division**

1. “Good Day Sunshine” – round arrangement
2. “Twist and Shout” – own interpretation



## **ARTISTIC SILK ARRANGEMENTS – DEPT. 113** **Senior or Junior Division**

### **Show A**

**Tuesday, July 18, 2023**

1. “When I’m 64” – vertical design
2. “Johnny B Goode” – arrangement using more than 3 colors
3. “Yesterday” – own interpretation



## SILK ARRANGEMENTS HELPS:

Before you begin arranging, you should be aware of the importance of key elements and principles to floral design. These basic ideas can guide the arranger to combining flowers and determining their various placements within the container. Attention must be paid to the integration of forms, lines, and colors. Despite all of the rules to learn and techniques to master, floral design is primarily intuitive and a personal art. By practice, repetition, and experimentation, you'll begin to sense when you've arranged every component to perfection.

### Elements of Arranging

There are five elements of floral design: Form, space, line, texture, and color. An understanding of how they influence each other is essential to "good" design. Each element makes a distinct contribution.

**Form** refers to the shape of the design and describes the width, the height, and the depth. The factors are part of the three-dimensional geometry of a design, which can vary from straight lines to curves and circles and to triangular shapes that include cones and pyramids.

**Space** is the void left between each flower, green, or branch and is as necessary as the material themselves. Space is used to draw attention to different elements and groupings within the arrangement. A space arrangement places a lot of emphasis on space, while one that is very crowded can actually diminish the visual effectiveness of the individual elements.

**Line** is vital as it "outlines" an arrangement. The difference between line and form is that form describes shapes within a boundary, while line traces the boundaries of a design. Lines can be curved, triangular, or a group of straight, vertical lines. To draw attention to a particular area of design, many materials can be used. Some examples are: branches, pussy willow, spike flowers, and eucalyptus.

**Texture** refers to smoothness or complexity of the surface of design material. The texture of the arranging material is as important as its shape when determining what other flowers it is best combined with and how it should be displayed. For example, an orchid is more appropriately displayed in a crystal vase than in a basket. A wildflower is at home in a basket or handmade container.

**Color** is probably the most obvious and most important element of flower arranging. Color will determine the success or failure of a design because it is such a vivid element. The old decorating rule of thumb holds true for flower designs - complementary colors, which are generally defined as cool (blues and greens) and warm (reds and oranges) work best together. However, there are many colors that fall in between and many other aspects of color to consider.

### Principles of Arranging

Principles are qualities that the arranger brings together which add the finishing touches to the basic elements. The principles are: Balance, unity, scale, accent, harmony, and rhythm.

**Balance** is achieved when considering aspects of the "whole". A container must be complemented based on the height and characteristics of flowers. For example - darker flowers seem weightier and are best placed at the bottom and/or the central of an arrangement. Lighter flowers are good choices for strong vertical elements that push upward and outward to create a greater sense of height. Flowers, greens, branches, and other materials should be appropriately placed in a container so that there is no chance the design will topple.

**Unity** is created when all aspects of the design are properly integrated. Designs that use "everyday" flowers such as cornflowers, mums, and marigolds can be unified by addition of burlap ribbon, pods, and pinecones, or a container such as a basket or simple bowl. Designs that include roses, orchids or calla lilies call for simple, elegant glass containers and fancy filler flowers such as Queen Ann's lace, statice and high-quality ribbon.

**Scale** is the harmonious, proportional grouping of all parts of the design. Large flowers must not completely overshadow smaller ones. A long-stemmed flower should not tower in a bud vase and a small flower would be dwarfed in a tall container. An arrangement with height that is displayed in a tall container should

be displayed in a wide-open space. A miniature arrangement should be placed in a small area or space.

**Accent** is created by the use of a flower or grouping of flowers that is dominated in color, size, or shape. A large flower placed among less dominant flowers becomes the accent of a design. With flowers of equal size, the one with the dominant color will create the accent.

**Harmony** describes the way materials of an arrangement work together. Spiky flowers can provide an overpowering linear arrangement if not harmonized with round shapes.

**Rhythm** is evident when the eye is drawn gently and pleasingly through the floral arrangement. Rhythm draws the eye from bolder to subtler elements.

### Arrangement Styles

There are three types of arrangement styles: Traditional, ikebana, and contemporary.

**Traditional** (formal) refers to many styles of the past that encourage symmetry of design as well as a lavish use of a variety of flowers and colors. Certain classic flowers such as roses, lilies, and orchids are generally used in traditional design, but flowers of all types will work if used effectively and in a sophisticated manner.

**Ikebana** is a "sparse" art that stresses simplicity. This Japanese art form is one of the best examples of symbolism. The floral components of ikebana are irises, Fuji mums, or lilies. Foliage, branches, and grasses accentuate the focal flowers, radiating upward and outward toward heaven. Natural accessories include stones and wood. Most conventional ikebana designs include just three of any one flower and the designs have a triangular shape.

**Contemporary** design defies description because every new design that innovatively uses flowers can be included in the contemporary category. Contemporary designs usually provide an element of surprise and use material in an inventive way.

### Containers

A container should never overwhelm or underestimate the materials it holds. Simple, designs are often the best choices. For formal designs, eye-catching containers that are part of the elegance of the overall effect can be used. Containers that are heavily decorated and brightly colored will take away from the floral design.

There is a large array of containers to choose from. They vary in shapes and also choices of materials including baskets, glass, ceramics, pottery, and metals.

Two important factors in considering the container is to be certain that the opening is wide enough to accommodate your design and to consider the container's height in relation to the design. Normally, the arrangement should be one-and-one-half times the height of the container.

The decorative appeal of the container should also be considered. Its decoration should bear a color that will unify the design. Long stemmed roses would not be placed in a squat container and a basket would not be appropriate for an ikebana flower arrangement.

### Mechanics

The general mechanics of a silk floral design should be neat and camouflaged. Foam blocks, if used, should be secured within the container to avoid slipping or tipping of the arrangement. The foam should be covered with moss, grass, bark, or other natural components in order to disguise it. The size of the foam block should not overpower the container in which it is located, or the design itself. Avoid the need to continually rearrange your design or the foam will be filled with holes and will not be a stable base. Your first instinct as it concerns placement, is "usually" correct.

All wire stems on flowers, fillers, and foliage, other than natural green, should be wrapped securely with green tape for cover and flexibility. Any unusual mechanics utilized to create your design should be "naturally" camouflaged so as not to be detected by the eye.



# FLOWER SHOW ENTRY FORM

Pass # \_\_\_\_\_

(or entry will not be accepted)

Name: \_\_\_\_\_

Address: \_\_\_\_\_

City: \_\_\_\_\_ Phone: \_\_\_\_\_

- Please check fair book for regulations
- Pre-registration for ARTISTIC DIVISION ONLY must be received by **FRIDAY, JULY 12, 2024**.

<b>CLASS (Use wording from book)</b>	<b>SHOW</b>	<b>CLASS #</b>
EXAMPLE: " Woodpecker"	A	1

MAIL TO: Ottawa County Fairgrounds  
7880 W. SR163 Oak Harbor, Ohio 43449  
Phone: 419.898.1971

**DOMESTIC OPEN CLASS ENTRY FORM**  
**PLEASE USE ONLINE REGISTRATION THRU BLUE RIBBON**

Only use this form if you cannot register online

Pass No.: \_\_\_\_\_

(or entry will not be accepted)

Name: \_\_\_\_\_

Address: \_\_\_\_\_

City: \_\_\_\_\_ Phone: \_\_\_\_\_

◆ **PLEASE READ & FOLLOW ALL RULES FOR EACH DEPARTMENT**

◆ **Entry must be received by FRIDAY, July 12, 2024**    ◆ Entries will not be accepted unless pre-entered

**Departments 101, 103, 104, 105, 106, 107, & 108 Entry CHECK-IN - Sunday, July 14, 2024**

◆ **DO NOT** enter any item that has been exhibited in a previous Ottawa County Fair

\_\_\_\_ Mark here if a professional (see rules)    \_\_\_\_ Mark here if you are a student    \_\_\_\_ Student's age

Class (Use wording from book)	Dept. #	Class#	Article to be hung (yes/no)	Size of Article
EXAMPLE: Crocheted, Afghan	103	4	No	50"x65"

MAIL TO: Ottawa County Fairgrounds  
 7880 W. SR163 Oak Harbor, Ohio 43449  
 Phone: 419.898.1971